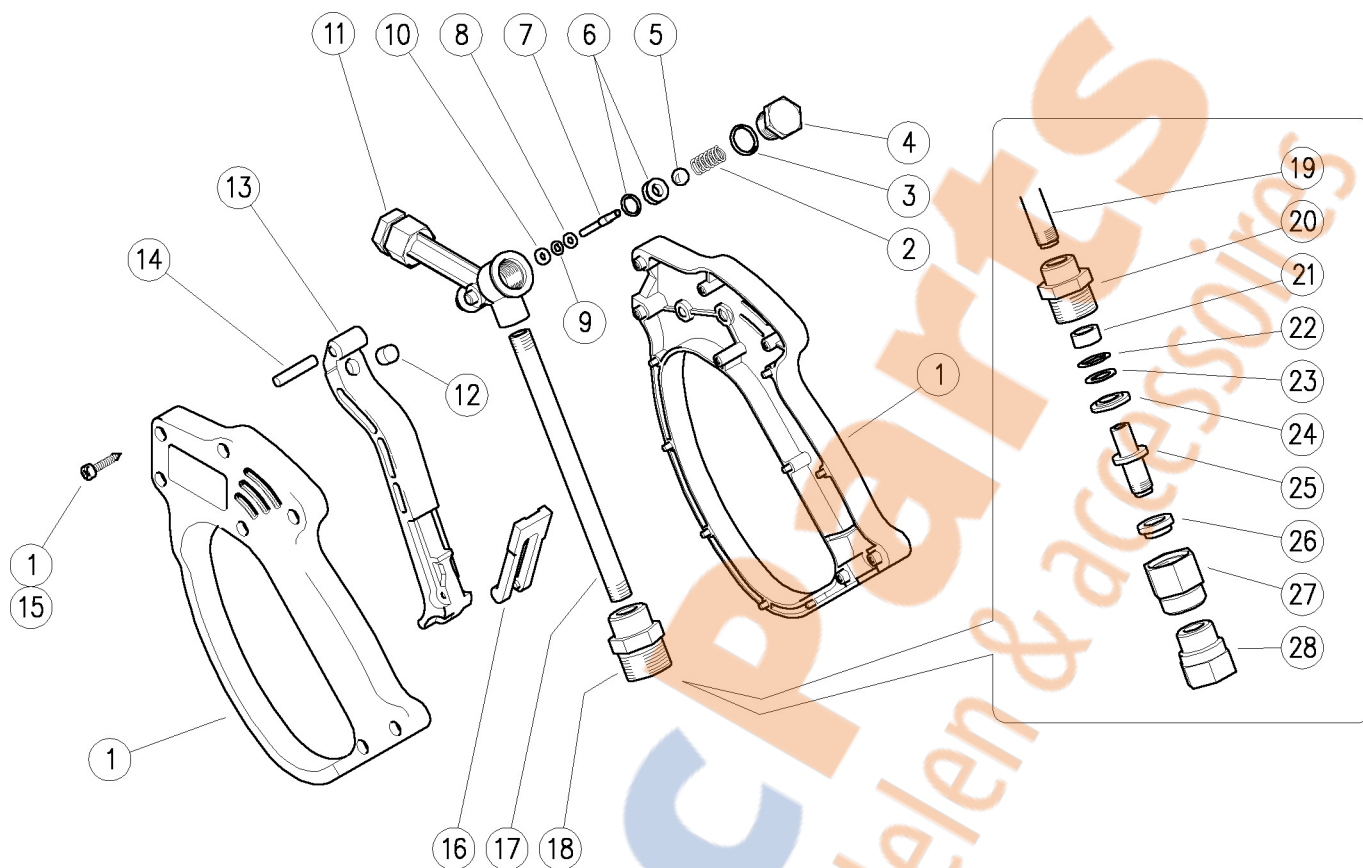


30.1755.00 RL26 spr.gun 3/8M-1/4F Bsp  
 30.1755.30 RL26 spr.gun 3/8F-1/4F Bsp  
 30.1755.50 RL26 spr.gun 3/8F-1/4F Npt

30.1755.60 RL26 spr.gun A M22-1/4F Bsp  
 30.1772.00 RL26 spr.gun+sw.8 3/8F-1/4F Bsp



Pos.	P/N	Description	Q.ty	K1	K2	K3	K4
1	30.1759.24	Casing-kit -RL26 +screws, Sst.	1				1
2	30.0703.51R	Spring, 1,3x8,5x19 mm Sst.	1				10
3	10.3060.01R	O-ring, 1,78x12,42 mm Ni 85	1	•	•		10
4	30.0702.31R	Plug, M14x1 brass	1				10
5	14.7448.00R	Ball, 5/16" Sst.	1	•	•		10
6	30.1708.20R	Seat, 6mm Sst.+O-ring 1,78mm NBR85	1	•	•		10
7	30.0704.51R	Piston, 3-4 mm Sst.	1	•	•		10
8	14.3511.00R	Washer, 3,2x7x0,5 mm sst.	1	•	•		10
9	10.3165.00R	O-ring, 2,62x2,84 mm Vi 70	1	•	•		10
10	10.4018.00R	Back-up ring, 3,2x7,5x1,2 mm	1	•	•		10
11	30.1700.35R	Central housing -RL26, 1/4F Bsp brass	1				5
11	30.1701.35R	Central housing -RL26, 1/4F Npt brass (1)	1				5
12	30.0675.84R	Stop pin, 8x7,1mm PA	1				10
13	30.1704.84R	Trigger -RL26, PA black	1				10
14	30.0509.31R	Parallel pin, 5x24,5 mm brass	1				10
15	16.3077.00R	S/tapping screw, DIN7981 3,5x18 mm	7				10

Pos.	P/N	Description	Q.ty	K1	K2	K3	K4
16	30.1510.84R	Safety latch, PA red	1				10
17	30.0706.56R	Tube, 1/8Bsp MM Sst.	1				10
18	30.1521.31R	Coupl., 1/8F-3/8M Bsp c/sunk brass (2)	1				5
18	30.1517.31R	Coupl., 1/8F Bsp-3/8F Npt brass (1)	1				10
18	30.0718.31R	Coupl., 1/8F Bsp-M22x1,5M brass (3)	1				5
18	30.1512.31R	Coupl., 1/8F-3/8F Bsp brass (4)	1				5
19	30.0734.56R	Tube, 1/8Bsp MM 97mm Sst. (5)	1				5
20	30.0727.31R	Coupl., 1/8F Bsp-M20x1M brass (5)	1				10
21	30.0728.84R	Bushing, 9x13x6 mm plast. black (5)	1	•			10
22	10.3109.93R	O-ring, 2,4x8,3 mm Vi 70 (5)	1	•			10
23	10.4008.50R	Back-up ring, 9x13,2x1,2 mm (5)	1				10
24	30.0729.31R	Spacer ring, 9x19x3 mm brass (5)	1				10
25	30.1553.31R	Pin -SW, M10x1,25 M brass (5)	1				5
26	30.0730.84R	Bushing, 10x17x6 mm plast. black (5)	1	•			10
27	30.0733.31R	Nipple, M20x1 F brass (5)	1				5
28	30.1554.31R	Coupl., M10x1,25F-3/8F Bsp brass (5)	1				5

Kit	P/N	Description	Q.ty
K1	30.0736.24	Repair kit - RL26, 8x1pcs.	1
K2	30.0723.24	Spares kit -RL26+sw.8 11x1pcs.	1

(1) 30.1755.50 (2) 30.1755.00 (3) 30.1755.60 (4) 30.1755.30 (5) 30.1772.00